

READING ROOM FURNITURE

RADIOLOGY / RADIOLOGY / RADIOLOGY / RADIOLOGY
INTERVENTIONAL RADIOLOGY / RADIOLOGY

CATALOG Volume 51, Issue 2



THE WHITESTONE WORKSTATION ▶

The Whitestone is AFC’s radiology dream station. Complete electronic adjustment capabilities are the foundation of this highly adaptable workstation — for surface height in sit or stand positions, surface tilt, and both vertical and horizontal adjustment of monitors. The monitor brackets support large monitors weighing up to 70 lbs, responding to a growing interest in larger images. We have added acoustical properties to our wraparound privacy partition to reduce extraneous sounds and create a quieter environment for concentration. Multi-channel cable management keeps wires neat and unobtrusive.



Electronic Height & Tilt

Easy electronic adjustment of the work surface height and tilt (-5° to +10°). Digital readout for desk height with four memory presets. This enables every user to preserve optimal settings.



See page 11 for all accessories

Lighting

Adjustable LED backlight with dimmer control alleviates eye strain and improves readability of images.

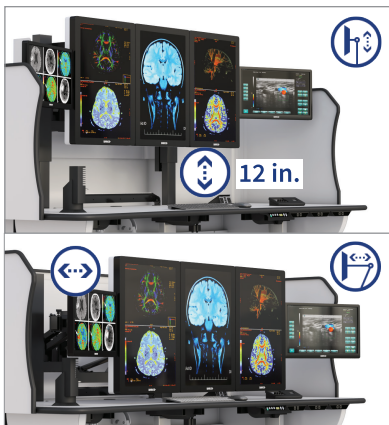
Soundproofing



Cooling System



USB & Data Ports



Monitor Arms on telescopic drives with electronic adjustment of monitors' height and focal length

Features and Benefits

- Electronic adjustment of work surface height and tilt
- Independent electronic adjustment of monitor height 12” stroke and focal length (forward/backward motion)
- Cold-rolled 11-gauge steel frame with epoxy-powder-coated finish
- Ambient LED backlighting with dimmer switch
- Complete wall-to-wall installation services

Specifications

- Work surface width: 84”W x 36”D
- Work surface height from the floor: 28” to 47”

DELUXE ERGO TIER ▶

The Deluxe Ergo Tier workstation is designed to meet the need for easy electronic adjustment of the work surface height and tilt, as well as independent monitor positioning for height and focal length.

The workstation can be enhanced with privacy partitions, shelving, computer storage, and other accessories.

Features and Benefits

- Electronic adjustment of work surface height and tilt (-5° to +10°)
- Electronic adjustment of monitor height and focal length (forward/backward motion)
- Cold-rolled 11-gauge steel frame with epoxy-powder-coated finish
- Particle-board-core top with your choice of high-pressure laminate finish edged with bumper molding
- Multiple colors available



Specifications

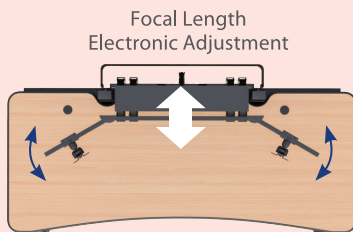
- Work surface width: 60", 72", 84", 96"
- Work surface depth: 34", 36"
- Work surface height from the floor: 28" to 47"
- Custom sizes available

Lighting

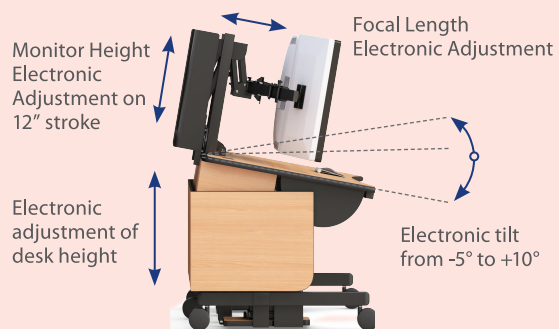
Adjustable LED backlight with dimmer control alleviates eye strain and improves readability of images.

Accessories

See page 11 for all accessories



Side monitors can be manually positioned to form an arc shape for optimum viewing



ERGO TIER SERIES ▶

The Ergo Tier has independent, electronic height adjustment of the work surface and monitor platform. This is but one of the 6 monitor platform choices available to you. The latest addition to the AFC product line is the new workstation, Ergo Tier ARC, that allows the end-users to set the focal length of the monitors and swing them left or right for viewing in different ergonomic sit-stand positions.



Features & Benefits

- Electronic adjustment of work surface height and tilt
- Electronic adjustment of monitor height 12" stroke and focal length (forward/backward motion)
- Cold-rolled 11-gauge steel frame with epoxy-powder-coated finish
- Multiple colors available
- Four-inch casters (two of them locking)

Specifications

- Work surface width: 48", 60", 72", 84", 96"
- Work surface depth: 30", 34", 36"
- Work surface height: 28" to 47"

Electronic Monitor Mounts

Monitor Arms on telescopic drives with electronic adjustment of monitors' height. Electronic or manual adjustment of monitor forward/backward motion.

Laminate finish

Pressurized and scratch-resistant long-lasting laminates in a variety of colors.

Electronic Height

Electronic adjustment of work surface height. Digital readout for desk height with four memory presets.

Accessories

A pencil drawer, split shelves and additional accessories are also available.

See page 11 for all accessories



Task Light



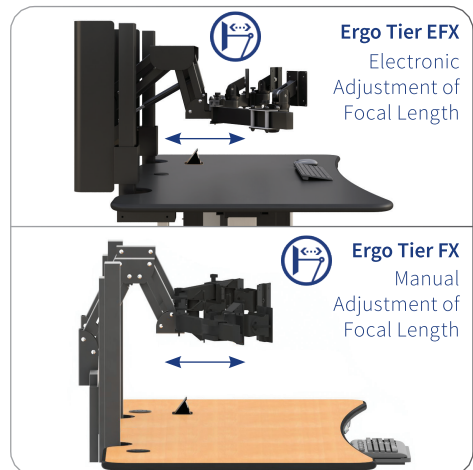
Pencil
Drawer



Cup Holder

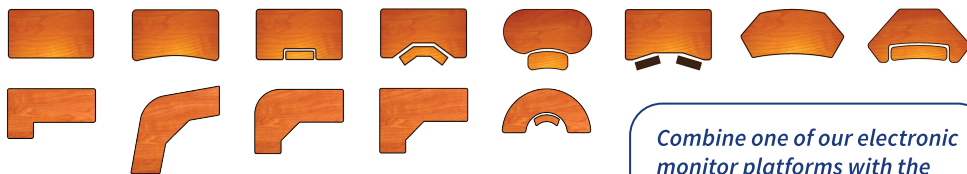


Wire
Management



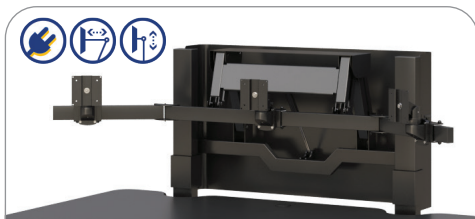
Work Surface Shapes

afindustries.com | 1-800-663-3412



Combine one of our electronic monitor platforms with the work surface shape above!

Electronically Adjustable Monitor Platforms



EFX Series

- Electronic adjustments: monitor height, focal length
- Side wings allow outer monitors to form an arc



FX Series

- Electronic adjustment: monitor height
- Manual adjustment: focal length
- Side wings allow outer monitors to form an arc



RX Series

- Electronic adjustment: monitor height
- Monitors can slide on horizontal track



ZX Series

- Electronic adjustment: monitor height
- Manual adjustment: individual monitor focal length
- Monitors can slide on horizontal track



TS Series

- Electronic adjustment: top shelf height
- Monitors can be free-standing or permanently attached



ARC Series

- Electronic adjustment: monitor height
- Manual adjustment of monitor focal length and ability to swing to the left and right

DUAL TIER SERIES ▶

The Dual Tier has two independently adjustable surfaces. In the bifocal setting, monitors are lower than the work surface, ensuring a comfortable viewing angle. This flexibility delivers optimum body positioning and comfort.

Work Surface Shapes



Optional Privacy Panel

Dual Tier Standard Shape

SKU 771662

Features & Benefits

- Independent electronic height adjustment of both tiers: 28" to 47"
- Cold-rolled 11-gauge steel frame with epoxy-powder-coated finish
- Multiple colors available
- Four-inch casters (two of them locking)

Electronic Adjustments

- Tier 1 Desktop Height
- Tier 2 Desktop Height



Both tiers at same height



Raised back tier



Bifocal position

Optional Accessories



Task Light Phone Arm CPU Holder



Cup Holder USB Ports Wire Management

See page 11 for all accessories



Dual Tier Corner Shape

SKU 772195



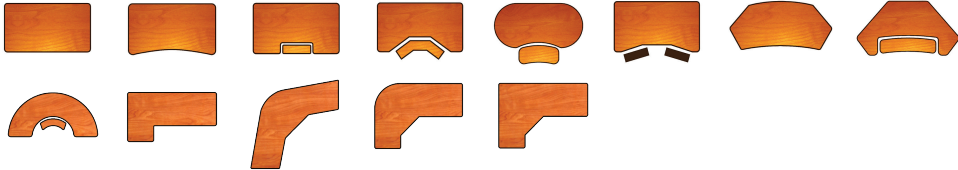
Optional Privacy Panel

SINGLE TIER SERIES ▶

afcindustries.com | 1-800-663-3412

Electronic height adjustment makes the Single Tier versatile for multiple users. With a full range of design options and accessories, the Single Tier is adaptable to any work environment. The desk can be enhanced with cabinetry, shelving, computer storage, lighting and other ancillary equipment.

Work Surface Shapes



Optional Privacy Panel

SKU 771652

Features & Benefits

- Electronic adjustment of work surface height
- Cold-rolled 11-gauge steel frame with epoxy-powder-coated finish
- Multiple colors available
- Four-inch casters (two of them locking)

Specifications

- Width: 36", 48", 60", 72", 84", 96"
- Depth: 24", 30", 36"
- Height of work surface from the floor: 28" to 47"
- Custom sizes available

Single-tier Bean Shape Workstation

- As shown 6 monitors configuration
- Each monitor holder on extendable Z-arm
- Work surface available in different finishes, shapes and sizes

Color Options



Optional Accessories

- Task Light
- CPU holder
- Metal Cup Holder
- Phone Arm
- Wire Management

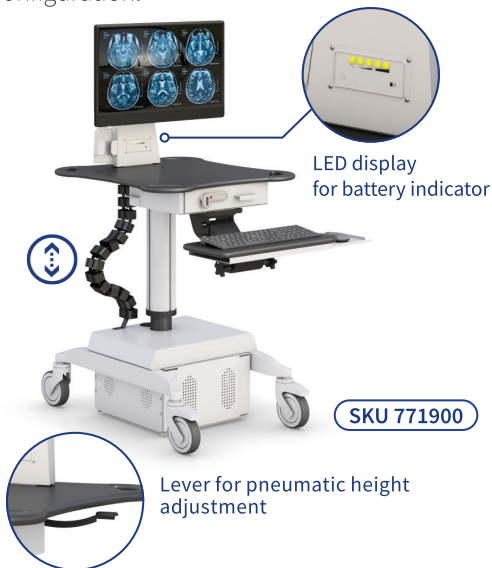
See page 11 for all accessories



SKU 772922

POC POINT OF CARE CARTS ▶

The POC Carts feature a low profile, small footprint, pneumatic (optional electronic) height adjustment, and support all-in-one computers as well as separate thin client PC's and monitor. For maximum portability, the carts can accommodate a battery power source. Select from our range of monitor arms, CPU holders, keyboard trays and other accessories to complete your configuration.



Specifications

- Footprint size: 22"W x 24"D
- Work surface size: 24"W x 24"D
- Height of work surface from the floor: 33" to 42"
- Keyboard tray size: 19"W x 8"D

Optional Accessories



Wire Basket



Scanner Holder



Camera Holder



Cup Holder



Wipe Holder



Utility Shelf

Features and Benefits

- Pneumatic or electronic height adjustment
- Clean room use
- Mounting for standard monitor VESA (75/100)
- Rounded phenolic, HDPE, laminate, or metal work surface
- Seamless integration of handles into the work surface on all four corners for easy grip and maneuverability

Laptop

secure laptop locking shelf

Double Drawer



MOBILE MONITOR STANDS ▶

The Mobile Monitor Stand can be configured according to the user's specific needs and enhanced with multiple options, such as multi-monitor mounts, retractable keyboard and laptop tray, additional shelves, CPU holder, camera holder for teleconferencing, remote communications, and recording applications.

- ### Features and Benefits
- Fits multiple size monitor screens
 - Monitor mount tilts from -5° to +15°
 - All components are manually height adjustable
 - Built-in cable management

- ### Specifications
- Footprint size: 30"W x 30"D
 - Utility shelf: 18"W x 16"D
 - Four-inch casters (the front two are locking)
 - Overall height from the floor: 62"

Configuration Options



Multiple monitors

SKU 772615



SKU 772109



SKU 772435

Optional Accessories

 Keyboard Tray	 CPU Holder
 Camera Holder	 File Holder

For oversized large display monitors a wide-stance cart is available

Call us today
to help configure your next project

[1-800-663-3412](tel:1-800-663-3412) info@afcindustries.com

PARTITIONS ▶

Complete your work area using AFC Partitions. These partitions absorb sound and provide privacy. They also prevent interference from monitors or other light sources. They can be manufactured with a tinted or clear Plexiglass panel across the top so operators can see outside of their “cubicle.”

AFC offers both free-standing partitions and partitions affixed to the floor or cart. Our partitions can be configured to suit your application.



Features and Benefits

- One-inch sound-absorbing fiber with reflector on one side
- Cold-rolled 11-gauge steel frame
- Prevents light interference
- Can be used as a tack board
- Multiple colors available

Optional

- 1/8” tinted or clear Plexiglass top
- Fiber top with removable lower metal panel and built-in continuous cable management
- Free-standing, mobile (2-inch twin casters), or affixed to the floor/cart

Color Options



Specifications

- Width: 36”, 48”, 60”, 72”
- Height from the floor: 60”, 72”



SKU 771676

Partition
60”W x 60”H



SKU 772068

Partition
60”W x 72”H
with tinted Plexiglass top



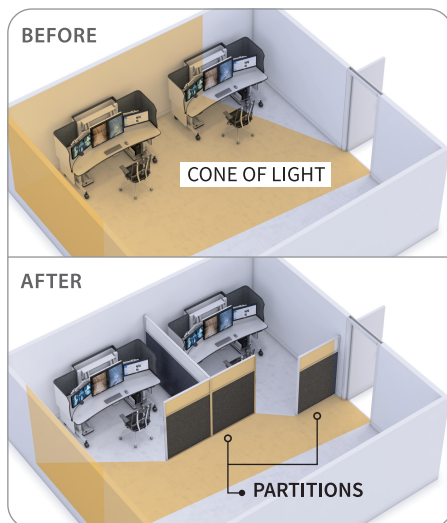
SKU 771678

Partition
72”W x 72”H
with black frame



SKU 771681

Partition
60”W x 72”H
with clear Plexiglass top



ACCESSORIES ▶

afcindustries.com | 1-800-663-3412

CPU Holders



Desk-Mount
SKU 771600



Desk-Mount
SKU 771303



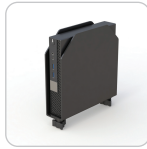
Base-Mount
SKU 771307



Base-Mount
SKU 771713



Mobile CPU
SKU 771601



Mini CPU
SKU 772893

VESA Mount Keyboard Trays



VESA 200x100mm
SKU 772552



Retractable Tray
SKU 772230



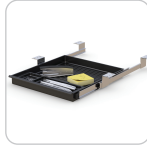
Swinglift
SKU 771323



Ergo Shape
SKU 771326



Sliding Tray
SKU 771916



Pencil Drawer
SKU 771612

Drawer

Phone Arms



Phone Arm
SKU 771333



Phone Arm
SKU 771607

Lighting



Task Light
SKU 772723



Combo Light
SKU 772720



LED Backlighting
SKU 772141

Air System



Cooling System
SKU 772965

Wire Management



30" Length
SKU 771622



60" Length
SKU 772390



Desk Mounted
SKU 772472

Data Ports



USB Port
SKU 771918



Pop-Up Port
SKU 771919



Pop-Up Power Port
SKU 772857

Power Strips



8 Outlets
SKU 771623



24 Outlets
SKU 771624

Cup Holder



Cup Holder
SKU 771728

Casters & Glides



Glide
SKU 771268



4" Caster
SKU 771260

Foot Rest



Foot Rest
SKU 772415



Solution creators for working environments™

13-16 133rd Place • College Point • NY 11356

Phone: +1 718-747-0237

Fax: +1 718-747-0726

Email: info@afcindustries.com

afcindustries.com

